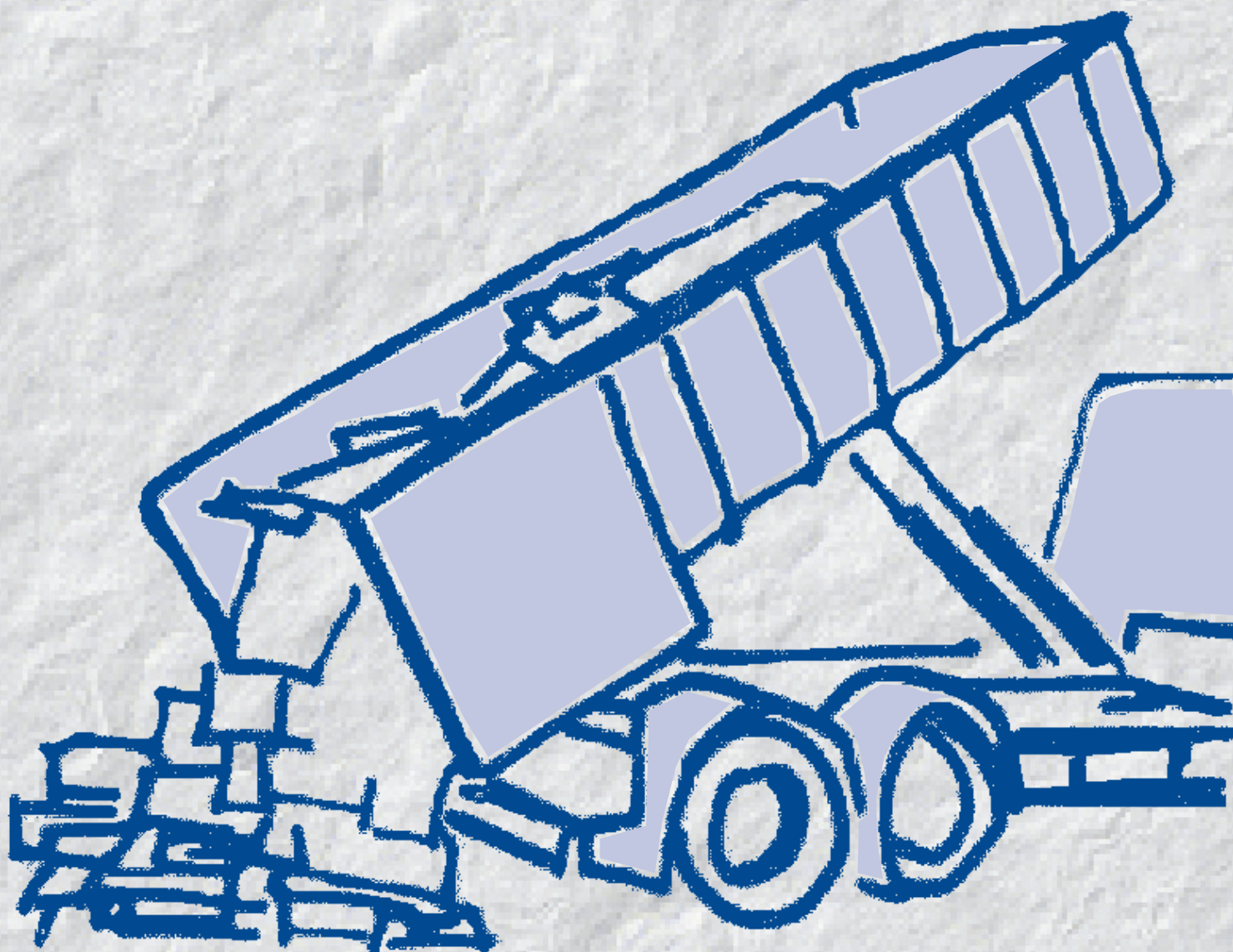


The integrated solution for the waste and recycling industry!



About enwis

enwis is the business solution for waste management and connects an efficient ERP system with a demand-oriented industry solution.

Even in the standard enwis maps all disposal- and recycling-specific business processes, the cooperation with Microsoft ensuring maximum investment security.

Completely integrated, enwis covers all processes in the company, whether it is typical business processes or specific operations of the waste management industry.

tegos GmbH Dortmund

Oslostraße 2
D-44269 Dortmund

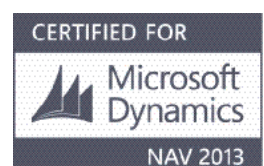
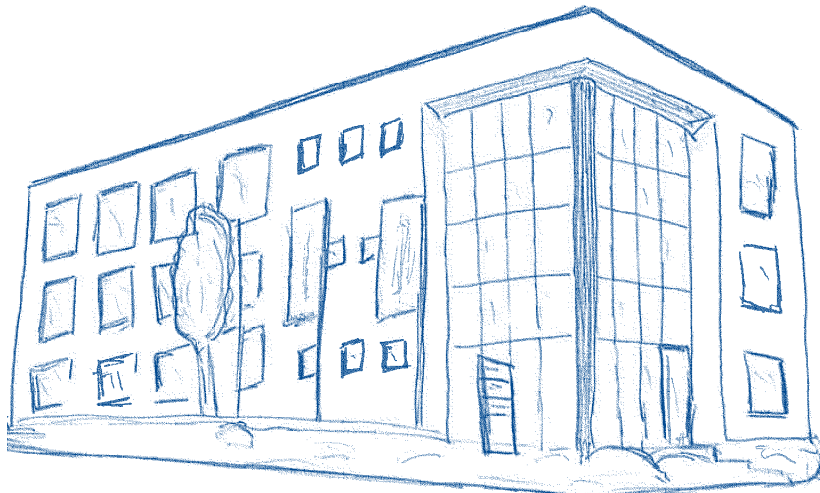
Your contact for enwis:

Pascal Wollnik

pwollnik@tegos.eu

+49 231 31776-214

www.tegos-group.com/enwis



One solution - all functionality

enwis supports you in all of your business challenges: in order to survive in an increasingly competitive market, waste management companies today need to make their operations as efficient as possible and avoid errors as much as possible. A high level of transparency in all business areas and good accessibility of data and information are fundamentally.

Due to the complete integration of all system areas, you win an overview of all business processes and can optimally organize them in mutual agreement, maximizing the efficiency. enwis replaces a wide range of individual solutions in many companies, which are often not or insufficiently cross-linked, and thus reflects the complete business

process. Consequently, data need only be entered once and are then available to all users, so that the right information is available at any point and can for example be used for business analysis.

Highlights

- Credit and debit processes in one order
- Scale Integration
- Contract Management
- Planning of amounts
- Quota Management
- Flexible Price Management
- Tracking of material flows
- Transport Requests
- Mapping of exchanging shares
- Paperless interface to system disposal companies (eg Interseroh)
- Fast order entry
- Freely definable internal material types
- official GCU catalog
- Storage and warehouse management
- Container Management with integrated rent bill
- Treatment methods
- Flexible billing at your fingertips
- Operating Diary
- Documentation and Verification
- Management of laboratory analyzes
- Comprehensive accounting functionalities: financial accounting, asset accounting etc.
- Possible Add-On integration: telematics, information management, document management, etc.

Adaptable

All functionalities of enwis are tried and tested and have proven themselves with our customers in many cases. As add-ons numerous software solutions such as telematics by tegos and the document management system dms by tegos are

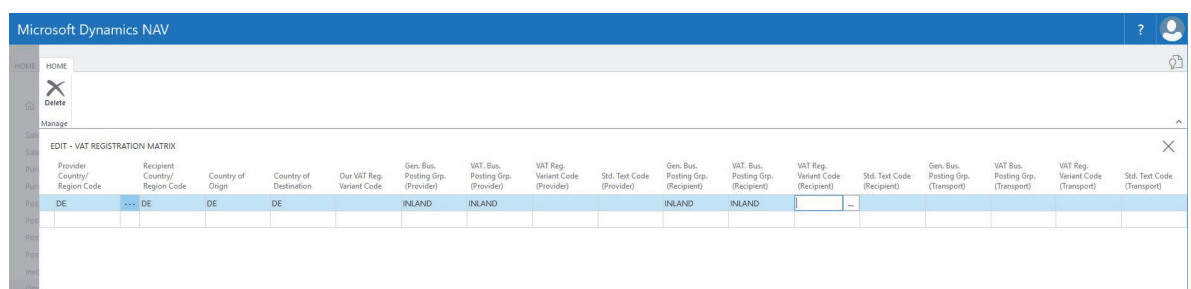
available. Individual adaptations to specific customer requirements and special developments are of course also possible.

Advanced VAT

Within transactions in which companies with different VAT numbers participate, enwis is able to

- report the right identification number and, if necessary, additional texts in the final document and
- carry out the correct booking of sales tax (amount and account assignment).

Calculating and accounting of the VAT are made in the usual automated form also for the international business. Requirements that are eligible for calculating and accounting the VAT for businesses in EU-foreign transactions, third-country transactions and domestic transactions, such as principle of country of destination or country-specific VAT are of course considered.



Provider Country/Region Code	Recipient Country/Region Code	Country of Origin	Country of Destination	Our VAT Reg. Variant Code	Gen. Bus. Posting Grp. (Provider)	VAT Bus. Posting Grp. (Provider)	VAT Reg. Variant Code (Provider)	Std. Text Code (Provider)	Gen. Bus. Posting Grp. (Recipient)	VAT Bus. Posting Grp. (Recipient)	VAT Reg. Variant Code (Recipient)	Std. Text Code (Recipient)	Gen. Bus. Posting Grp. (Transport)	VAT Bus. Posting Grp. (Transport)	VAT Reg. Variant Code (Transport)	Std. Text Code (Transport)
DE	DE	DE	DE		INLAND	INLAND			INLAND	INLAND						

VAT matrix

Up-to-date

Accurate and complete data and information are crucial for long-term success. enwis ensures that you always have the right information about all customers and vendors as well as places of operation

and suppliers on hand: in each step, is it the order entry or billing, enwis resorts to the master data stored in the system. These data is only entered once and is consistently available for all users.

Microsoft Dynamics NAV

EDIT - CUSTOMER CARD WASTE MANAGEMENT

D10000 · Abfallerzeuger GmbH

General

No.	D10000	Contact	
Name	Abfallerzeuger GmbH	Search Name	ABFALLERZEUGER GMBH
Name 2		Balance (LCY)	1.901,19
Address	Elbestraße 14-18	Credit Limit (LCY)	0,00
Address 2		Salesperson Code	JR
Post Code	22417	Responsibility Center	
Country/Region Code		Service Zone Code	
City	Hamburg	Vendor No.	K10000
Area Code		Reason Code	
Official Area Key Code		Blocked	
Phone No.	+49 (40) 123456	Blocked for New Orders	<input type="checkbox"/>
Primary Contact No.		Last Date Modified	03.09.2018

Communication

Invoicing

Payments

INLAND INLAND

Z14

Sell-to Customer Sales History

0	0	0
0	0	0
0	0	0
0	3	0
0	0	0

Customer Statistics

Customer No. D10000

Balance (LCY) 1.901,19

Sales

Outstanding Orders (LCY) 0,00

Shipped Not Invd. (LCY) 0,00

Outstanding Invoices (LCY) 0,00

Debitorcard

Smooth

Through the sharing of information within the workflow erroneous data entries are avoided because each processing stage is based on the pre-

vious and uses the same documents and data. For example, a contract is generated from an offer and an order is generated from an contract.

Quick

After a new order is placed, things often must go very quickly. With QuickDoc, [enwis](#) contains a functionality for a fast order entry, which reduces the required steps to a minimum and thereby significantly increases the efficiency of order acceptance. Once a request is received, the responsible

employee can retrieve all necessary data of the customer and the site and create a new order from existing offers or contracts. [enwis](#) determines the appropriate prices for the respective services according to a differentiated pricing catalog.

Flexible

In everyday business, it is often the case that subcontractors are included in an order. This is for example the case when an external carrier is responsible for the collection of waste to execute a disposal order. [enwis](#) can map those business pro-

cesses easily as credit and debit positions can be recorded and billed together in one order. Costs and revenues of a contract thus are immediately visible.

Variable

Prices can be set very differentiated in **enwis**. All criteria such as service, material, debtor, equipment, delivery, etc. and their combinations can be assigned to prices so that the pricing can be made highly individual and complex. However, you also

have the option to keep your pricing structures manageable. As individual or standardized as the proce catalog is also the design of the invoice lay-outs which can be assigned to any number of debtors.

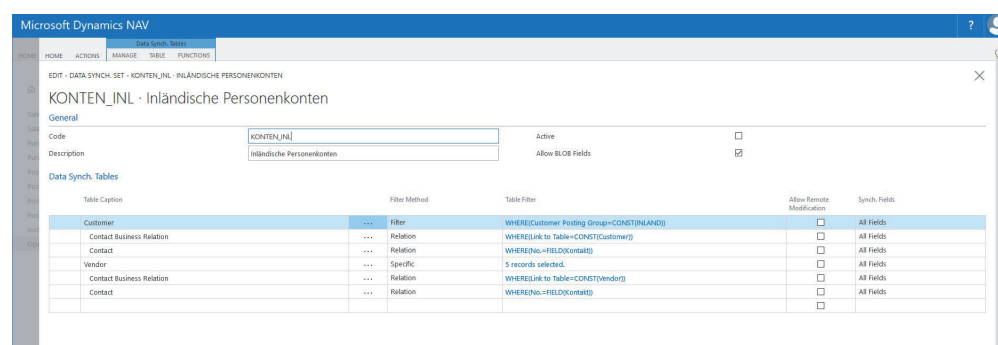
Master Data Synchronisation

When working with several clients, the same facilities, master and auxiliary are often made in all clients. If this data is changed, those changes must also be carried out in all clients.

The module Master Data synchronization (abbreviated MDS) helps manage facilities, master and auxiliary centrally and to transmit this information up to date in any client, even over database boundaries. A change lock protects the data replicated from accidental changes by the user. Central management of and the reduction of multiple entry errors will be avoided.

What facilities, master and auxiliary can be replicated with the MDS can be freely configured. In addition to the tables to be replicated also the fields of these tables can be configured. Also, you can configure replicated data by freely definable filters or by selection.

By defining relations you can also combine tables. If a dataset in a parent table is replicated, the dependent tables are automatically copied due to the relation. Thus, the module can always be adapted to the changing needs and stay flexible in the future.



The screenshot shows the 'Data Synchronisation' setup for the 'KONTEN_INL' table in Microsoft Dynamics NAV. The 'General' tab is active, showing the table name 'KONTEN_INL' and its description 'Inländische Personenkonten'. The 'Data Synchronisation' tab is also visible, showing a list of tables and their synchronization settings.

Table Caption	Filter Method	Table Filter	Allow Remote Modification	Synchron. Fields
Customer	Filter	WHERE Customer Posting (Origin=CONSTINLAND)	<input type="checkbox"/>	All Fields
Contact Business Relation	Relation	WHERE Link to Table=CONST(Customer)	<input type="checkbox"/>	All Fields
Contact	Relation	WHERE No.=FIELD(Contact)	<input type="checkbox"/>	All Fields
Vendor	Specific	5 records selected	<input type="checkbox"/>	All Fields
Contact Business Relation	Relation	WHERE Link to Table=CONST(Vendor)	<input type="checkbox"/>	All Fields
Contact	Relation	WHERE No.=FIELD(Contact)	<input type="checkbox"/>	All Fields

Master Data Synchronisation

Comfortable

Resource movements, such as the provision or collection of containers are documented and recorded in **enwis** as financial transactions and amount of material movements as items. The ma-

agement of resources is carried out completely automatic and you always have the latest information on the respective locations and times.

Integrative

In **enwis**, an arbitrarily large number of scales can be integrated. The weighing process thus is an integral part of the order process as the input and output quantities of a weighing slip determined

by the scale are directly transferred to the order. Even foreign weigh tickets can be captured in **enwis**.

Straight

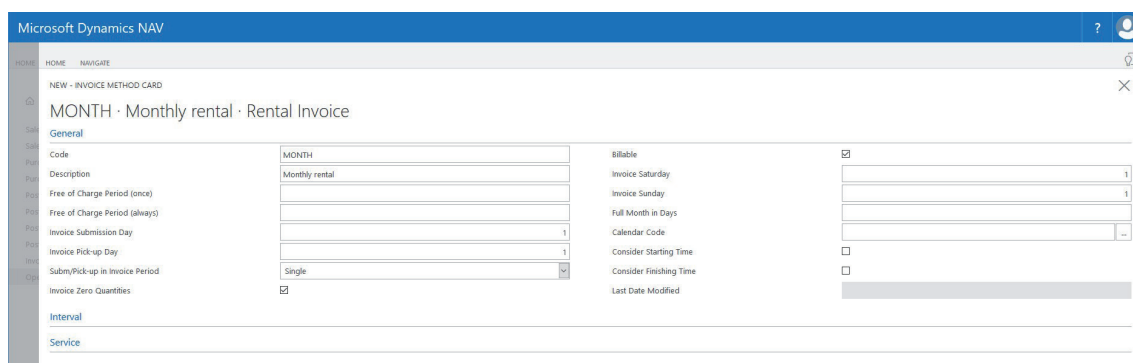
Due to the complete integration of financial accounting in **enwis** the booking of all order lines can be made directly in the system without de-

tours. External financial accounting solutions that are only connected via an interface to the system are redundant.

Powerful

The billing process for container hiring is done completely automatically, from choosing the right accounting method to the determination of the exact rental period up to the billable order. In **enwis** any number of different hiring accounting

methods and billing cycles can be set so that individual prices and billing intervals are taken into account. The rental period can be charged by second if necessary.



Hiring accounting in **enwis**

Well arranged

All stock inflows and outflows are automatically registered in **enwis** during order entry, posted and depending on the setting assigned to a specific storage location. For the assignment, for example, positive and negative catalogs can be created, which determine which types of materials may be stored at which locations. There is also the possibility to combine storage locations with specific customers or vendors. The balance of incoming and outgoing batches is done via the assignment of

methods for outward stock movement and can be performed either automatically or manually. The mapping of direct sales is possible, so that these quantities can be evaluated.

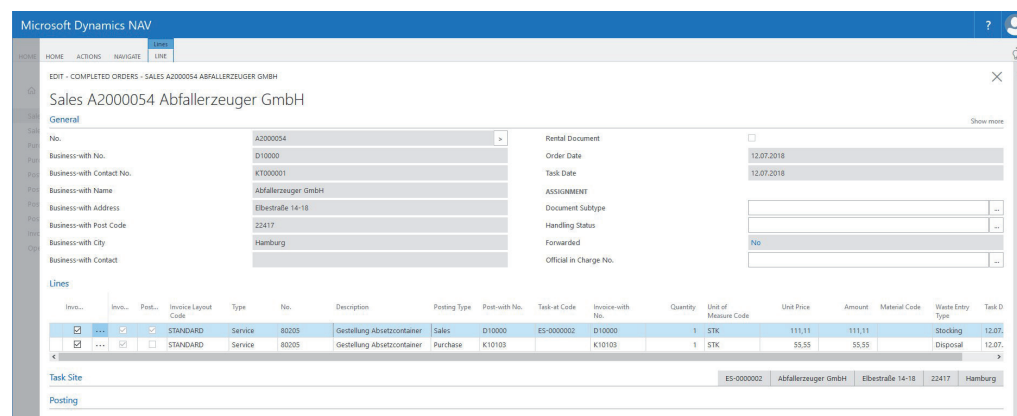
Using **enwis** you can always keep track of all the stocks in the respective warehouses and so have the ability to perform capacity planning. On this basis, you easily make rearrangements, follow them back and record inventory discrepancies.

Practical

The practical relevance of **enwis** is particularly evident in the billing functionality: the solution makes it possible to completely separate material amounts and amounts to be invoiced. The amounts to be invoiced thus is completely independent from the amount of the material to store so that you have an overview of all material quantities on stock or at the customer site, even if, for example, a flat fee has been arranged for the order. **enwis** therefore fulfills in a flexible way the practical

requirements of daily businesses and does not give a rigid pattern.

Invoicing is not for complete jobs, but flexible according to order lines that are automatically assigned to the corresponding invoice receivers. For billing the correct invoice layout for each receiver is always used.



Billing

Summing up

If a large number of orders with many different positions has to be invoiced, this can be done cumulative per invoice recipient. For this purpose, **enwis** automatically arranges the order positions

of each customer and forms, if desired, cross-order collective invoices. A single charge per order is also possible.

Retraceable

In the operation diary of **enwis** all quantity movements and events are recorded completely based on the amount of material management so that at any time it is understandable, which materi-

al in what quantity and at what time was stored at which place and how transports or rearrangements have been made.

Daily updated

At the end of a working day, **enwis** arranges all events and operations in a daily report. This report provides information about orders and in what time they have been processed, what resources

were in use and whether there were special events. The documented data can be incorporated in the respective orders.

12.02.09

Zugänge

AVV Code	Beschreibung	Herkunftsn	Firmenname	Begleitsche	Sammelbe	Menge	Einheit
170411	Kabel mit Ausnahme derjenigen, die unter					15,243	
170411	Kabel mit Ausnahme derjenigen, die unter	D000002	Metallhandel GmbH			22,700	
170411	Kabel mit Ausnahme derjenigen, die unter	D000002	Metallhandel GmbH			24,600	
170411	Kabel mit Ausnahme derjenigen, die unter	D000002	Metallhandel GmbH			24,140	
170401	Kupfer, Bronze, Messing	K000003	Metallhandel GmbH			26,280	

Daily report

Safe

enwis ensures the highest level of security. For each user or user group individual write and / or read permissions can be set so that certain areas

of the database can only be viewed and changed by authorized persons.

Ressource Planning

enwis offers a very detailed planning of resources and their capacities.

Capacity Items

Capacity items are the base of the resource planning. They include:

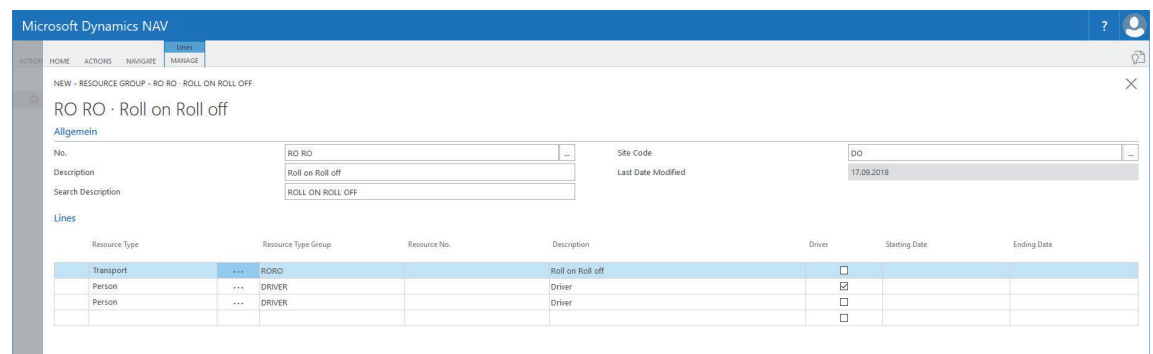
- Predetermined target capacity
- absences
- Schedule times
- operating times

The target times are saved as positive data, all other times as negative values. Carrying the commercial unit and the shift enables the system to display available resources per commercial unit and/or shift. Thus, the current status of a resource can be determined at any time by the capacity items.

Resource groups

Resource groups serve the combination of different resource types that are necessary for the execution of certain contracts such as bulky waste, sewer cleaning, etc. For that matter, specific resources can already be saved. This approach is useful if the resources are not daily planned and it is worked in fixed teams.

For resource planning, resource groups can be saved for a tour plan or a tour. Therefore, the lines of the resource group are transferred as tour resource lines.



Microsoft Dynamics NAV

NEW - RESOURCE GROUP - RO RO - ROLL ON ROLL OFF

RO RO - Roll on Roll off

Allgemein

No. RO RO Site Code DO

Description Roll on Roll off Last Date Modified 17.09.2018

Search Description ROLL ON ROLL OFF

Lines

Resource Type	Resource Type Group	Resource No.	Description	Driver	Starting Date	Ending Date
Transport	...	BORO	Roll on Roll off	<input type="checkbox"/>		
Person	...	DRIVER	Driver	<input checked="" type="checkbox"/>		
Person	...	DRIVER	Driver	<input type="checkbox"/>		
				<input type="checkbox"/>		

Resource group

Operation plan

The operation plan is a planning and evaluation tool, in which either the existing planning of resources can be displayed or changes can be made. The detection of absences such as vacation or sick leave of staff can also be managed through the operation plan.

Planning and scheduling of resources

The planning and scheduling of resources can be done in two ways. On the one hand on tours, that are planned and scheduled within the transport position. On the other hand on tours, which have developed over the cyclic document creation. In resource planning starting from the tour schedule, tours for specific assignments are created manually by the dispatcher. Is a resource group assigned to a tour plan, the resource types defined in the lines of the resource group are transferred and assigned to the tour schedule. The tours created from the tour schedule inherit the corresponding

resources.

Now specific resources have to be assigned to the tour resources, whereupon the dispatcher is provided with an overview of the resources and their available capacity. Furthermore, the overview „absence details“ is available. From this it can be seen when and why resources are not available, eg.:

- an employee is on vacation or is sick
- vehicle is in the workshop or needs inspection
- device needs maintenance

Furthermore, an overview of „assigned orders“ is available. This overview shows which orders are assigned to the tours to be planned.

Microsoft Dynamics NAV

HOME ACTIONS

EDIT - OPERATION SCHEDULE

Operation Schedule

General

Show as Lines: Resource: Employee

Show as Columns: Period: Show Column Name: ☐

View by: Day: Show Total Capacity: ☐

Show Values: Target: Assign Capacities: ☐

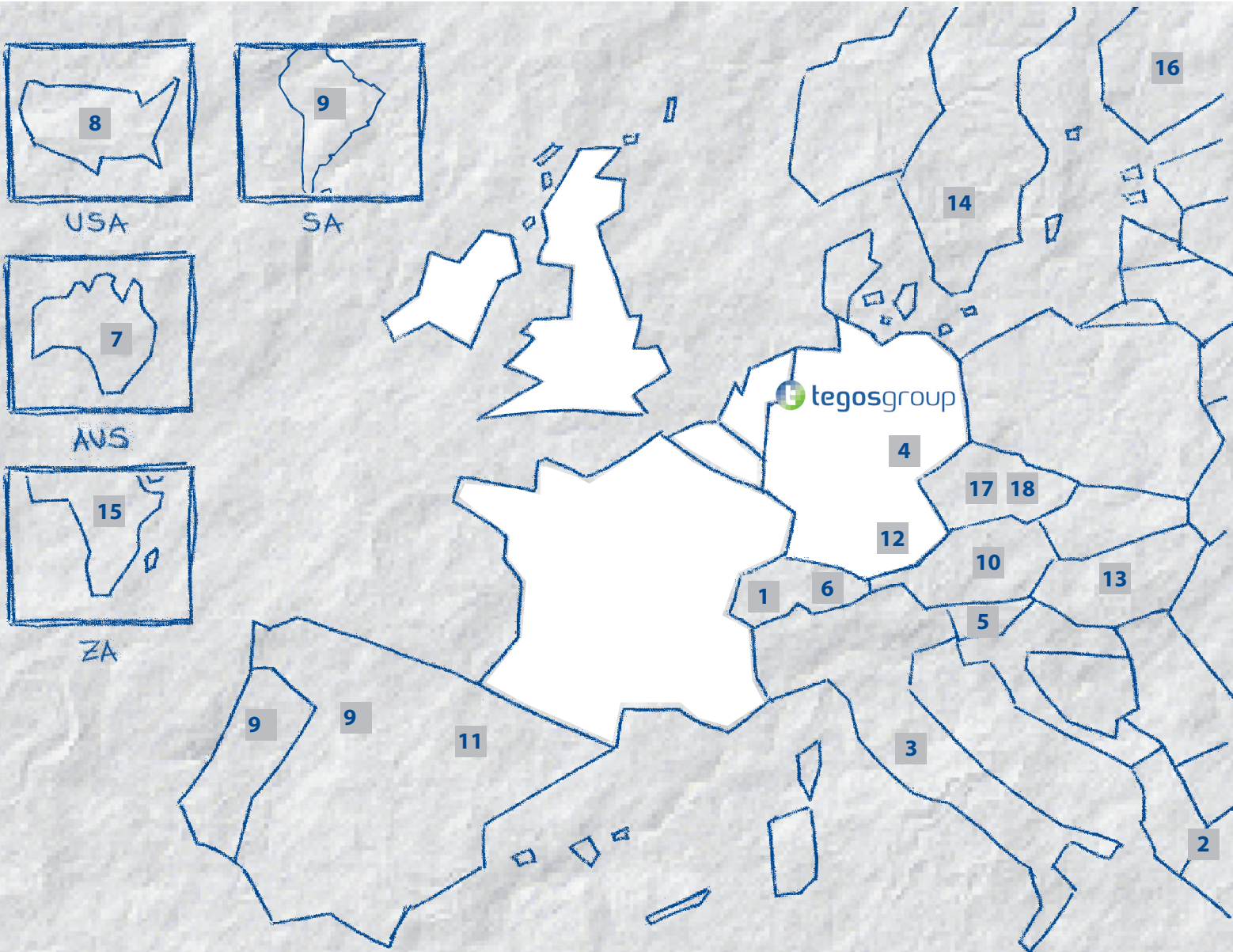
Operation Schedule Matrix:

Code	Name	30.08.18	31.08.18	01.09.18	02.09.18	03.09.18	04.09.18	05.09.18
AGO	Andreas Götten	8	6,5			8	8	8
ALA	Alexander Leik	8	6,5			8	8	8
DSE	Dirk Seidel	8	6,5			8	8	8
DWA	Doris Wagner	8	6,5			8	8	8
GBO	Günter Boldt	8	6,5			8	8	8
HBR	Henning Brinkmann	8	6,5			8	8	8
JMI	Jens Michalz	8	6,5			8	8	8
LKD	Lucas Kordowski	8	6,5			8	8	8
MHO	Manfred Hohenstedt	8	6,5			8	8	8
MFR	Maximilian Proff	8	6,5			8	8	8
MSC	Marcus Schmidt	8	6,5			8	8	8
NKO	Norbert Kirchhoff	8	6,5			8	8	8
TBR	Til Bruns	8	6,5			8	8	8

Filters

Operation Plan

Our international partner network



tegos GmbH Dortmund
 Oslostraße 2 - 44269 Dortmund
 Phone: +49 231 31776-0 Fax: +49 231 31776-199
 info@tegos.eu - www.tegos.eu



Your contact person: